



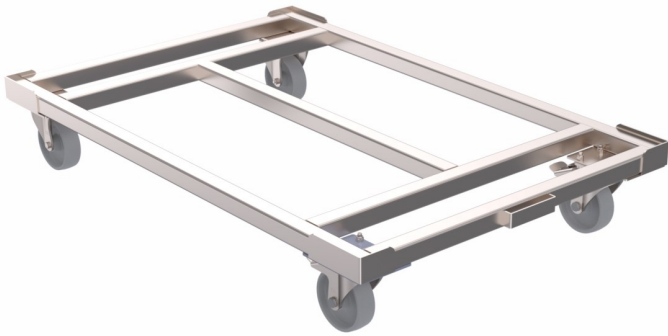
Metal Dolly Type 1200 x 1000

Technical Features

Equipped with 2 fixed and 2 swivel wheels, plain bearing, no marking.

Suitable to standart palletes dimensions of 1200x1000 mm.

Electrogalvanized body



External dimensions : 1210x 1010x 190 mm

Useful Dimensions : 1205 x 1005 mm

Tare weight : 8,9 kg

Wheel size : 125 mm

Wheel material : CPD or PU

Working capacity : 500 kg

Basic benefits:

It is designed to carry plastic crates and trays used in almost all industries. It can easily be integrated into your production system and used with or without a drawbar.

- Improve work flow through value chain
- Reduce handling costs
- Enable reduction of stock level
- Reduce need for floor space
- Improve ergonomics

Optional:

- Stainless steel body and wheels
- 4 castors- particularly manoeuvrable
- Cover with steel sheet

