



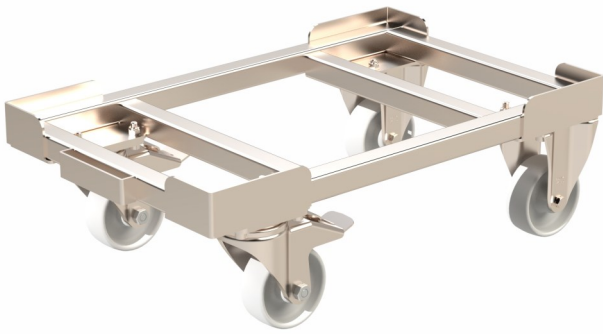
## Metal Dolly Type 600 x 400

### Technical Features

Equipped with 2 fixed and 2 swivel wheels, plain bearing, no marking.

Suitable to carry plastic crates 600 x 400 mm.

Electrogalvanized body



External dimensions : 610x 410x 160 mm

Useful Dimensions : 605 x 405 mm

Tare weight : 8 kg

Wheel size : 100 mm

Wheel material : CPD or PU

Working capacity : 300 kg

### Basic benefits:

It is designed to carry plastic crates and trays used in almost all industries. It can easily be integrated into your production system and used with or without a drawbar.

- Improve work flow through value chain
- Reduce handling costs
- Enable reduction of stock level
- Reduce need for floor space
- Improve ergonomics

### Optional:

- Stainless steel body and wheels
- 4 castors- particularly manoeuvrable
- Cover with steel sheet

